

# *A-IngestPro*

**Empowering Broadcasters: Delivery Workflow with Quality Assurance**

**25**  
years of **innovation**  
and **excellence**



# Challenges in Media Content Delivery

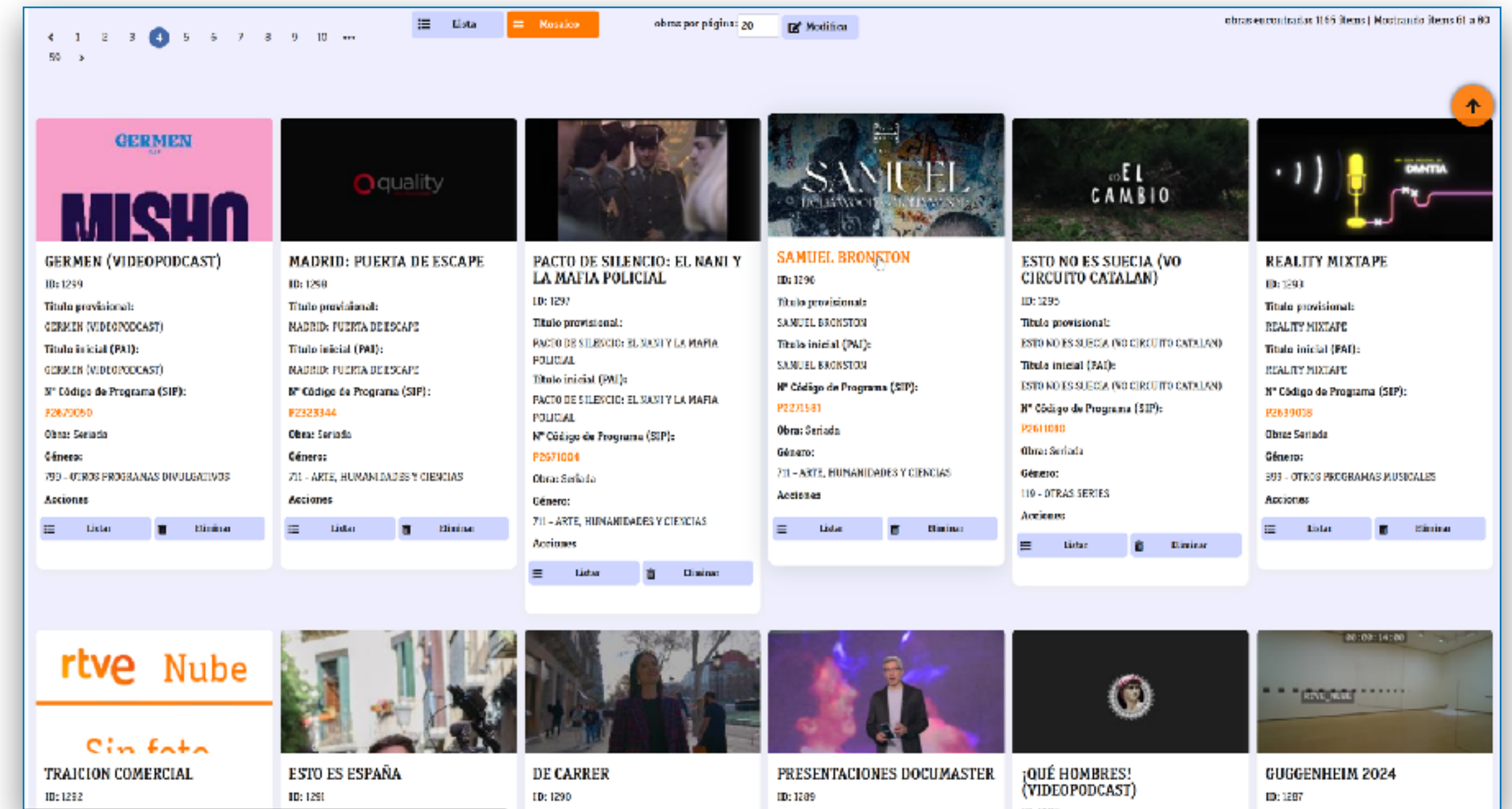
## Complexities Faced by Broadcasters



# A-IngestPro: A Trusted Solution

## Why Choose A-IngestPro?

- **A-IngestPro** is a tool to streamline *transport*, *quality assurance*, and *ingestion* of **broadcast media** for internal and external teams.
- **Proven Excellence:** Built on **RTVE's** bespoke development, trusted for over **8 years**.
- **Workflow Automation:** Automate delivery processes for timely and efficient outcomes.
- **Top-Tier Quality:** Ensure content excellence with *automated system checks* and *expert validation*.
- **Advanced Security:** Protect content with role-based access (2FA) and a **99.5% SLA** for cloud uptime.



# *Simplifying Complexity, Empowering Efficiency*

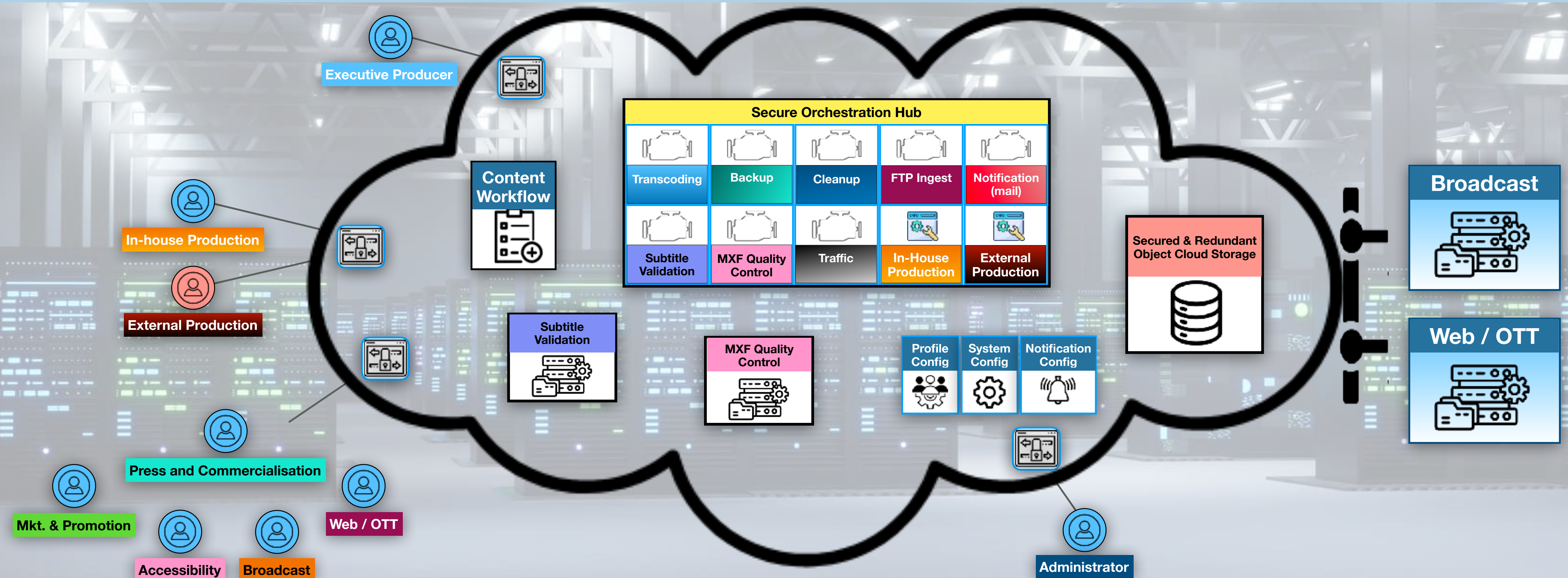
## Your Path to Hassle-Free Media Delivery

- Avoid cumbersome file exchanges and enhance workflows.
- Coordinate video, audio, metadata, and more with effective stakeholder collaboration.
- **A-IngestPro** provides a secure, collaborative environment with clearly defined roles and responsibilities.
- Achieve top-tier quality with **automated system checks** and **expert reviews**.
- Simplify **content cataloging** and **storage**, ensuring instant access across all platforms.



# A-IngestPro: The Logical Choice

## Streamlining Workflows with Advanced Features



Verify

Delegate Verification

Reject

Pending

# Mastering Production Complexity

## Turning Chaos into Order

- **Comprehensive Management:** The *Executive Producer* can easily manage every aspect of production.
- **Material Request Form:** Streamline the request for all necessary material:
  - Video and audio content in various formats and qualities
  - Accessibility materials (e.g., subtitles, audio descriptions, sign language)
  - Technical and artistic features (e.g., scripts, credits, metadata)
  - Press, commercial, and promotional content
  - Web and broadcast-ready materials
- **Production Assignment:** The *Executive Producer* assigns production works to *internal teams* or *external partners*.
- **Automated Notifications:** Ensure everyone is informed about their responsibilities and deadlines.

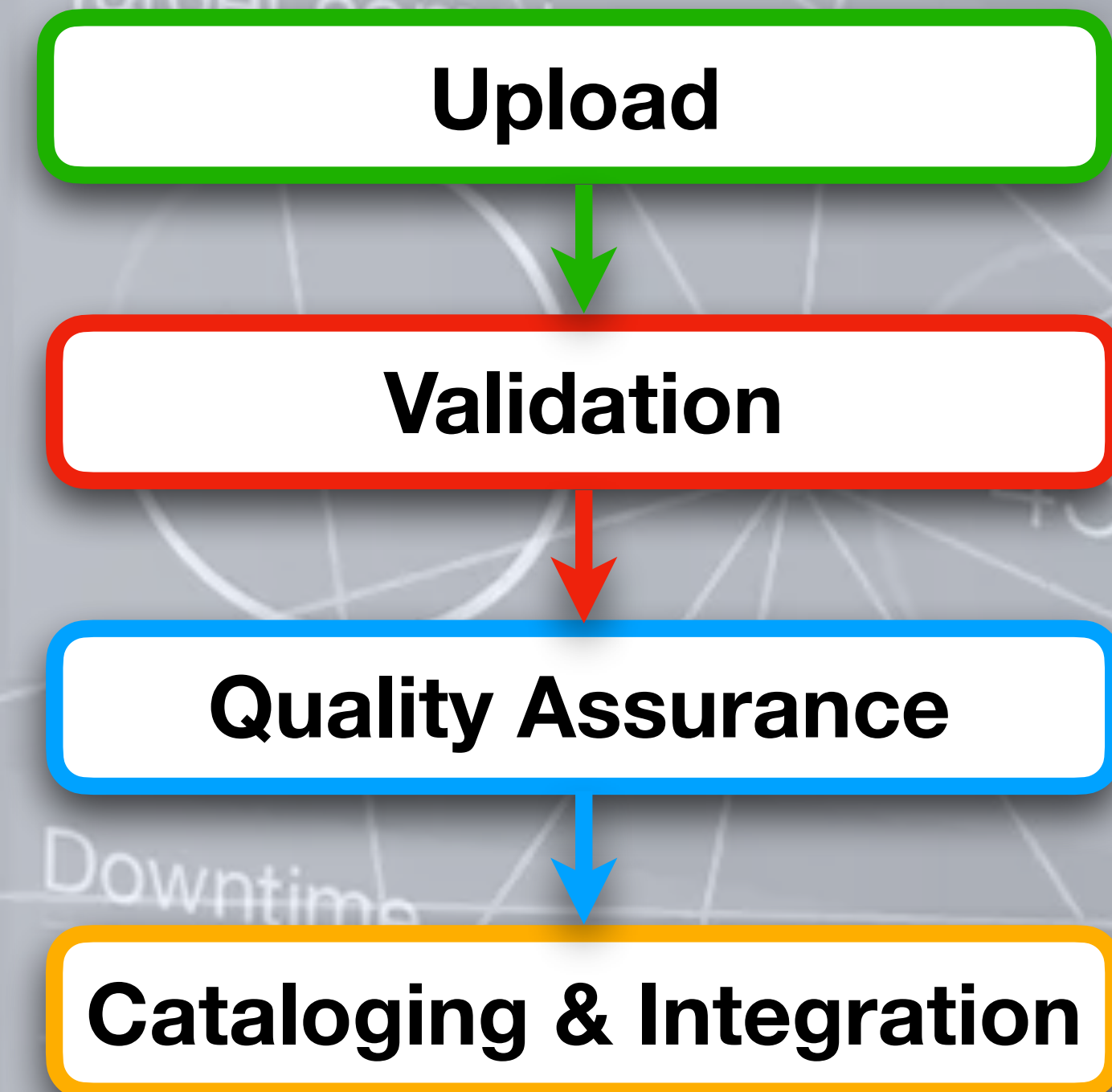
The screenshot displays a 'Material Request Form' with several sections and checkboxes:

- Common Materials:**
  - Pre-Master
  - Sinopsis corta, media y larga del capítulo
  - Technical and artistic sheet of the episode
  - Emission Master Recording Report
  - HD Emission Master  Disable automatic QA?
  - Master 2 HD (Long Version) Recording Report
  - Master 2 HD (Long Version)  Disable automatic QA?
  - List of music for SGAE
  - screening of the season
  - Low Resolution Copy of the Broadcast Master (mp4) without TC
  - Low resolution copy of Master 2 (Long Version) without TC (mp4)
  - Other materials
  - Press Notes
  - Transcript
  - Translated
  - Recording
  - Máster HD
  - Parte de Gr
  - Long version
  - Emission M
  - Emission M
  - Low resolution
  - Secondary Emission UHD master report
  - Secondary Master UHD  Disable automatic QA?
  - Low resolution copy of Secondary Emission Master UHD
- Accessibility Materials:**
  - Promo subtitles in Spanish for the deaf
  - English Promo subtitles
  - Promo subtitles in other languages
  - Other materials for Accessibility
- Promotional Materials and Art:**
  - Edited Promos (Advance and maintenance)
  - Promociones de duración máxima 9 segundos. UHD
  - Promociones de ±15 segundos. UHD
  - Promociones de duración entre 20 y 25 segundos. UHD
  - Videos de 1 minuto. HD
  - Videos de 1 minuto. UHD
  - Cortinillas gráficas de entre 5 y 7 segundos. HD
  - Cortinillas gráficas de entre 5 y 7 segundos. UHD
- Other options:**
  - Screening of the season
  - Promotional Season Flyer
  - Making Off Season

# Ensuring Quality and Compliance

## Precision from Upload to Integration

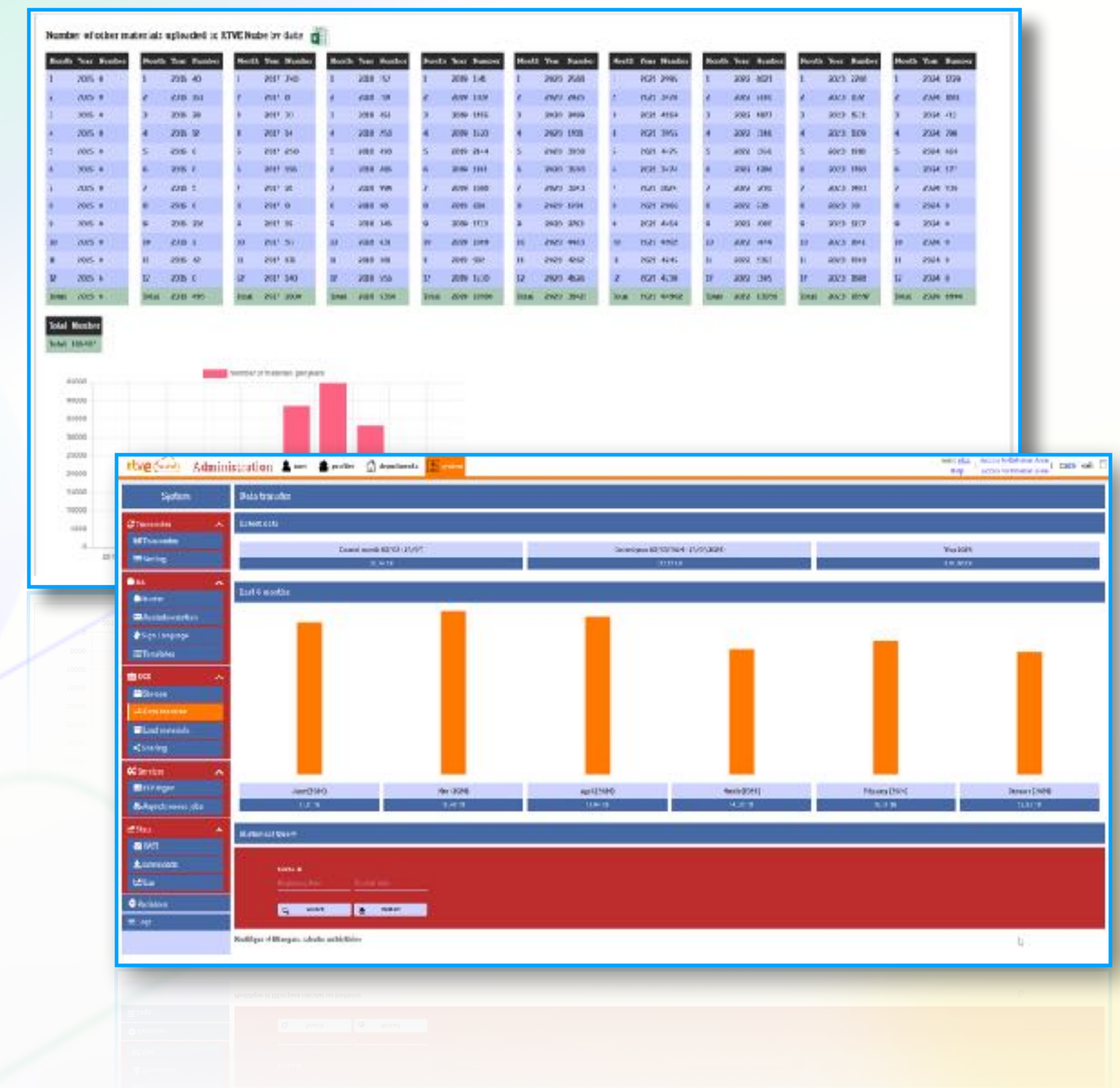
- **Material Upload & Validation:** Uploads are rigorously reviewed for quality and compliance.
- **Robust Quality Assurance:** Automated checks (*video quality, subtitle compliance,...*) and expert reviews ensure top quality.
- **Validation Workflow:** The *Executive Producer* manages the validation process with options to **verify**, **delegate**, **reject**, or leave **pending**, supported by email notifications.
- **Efficient Cataloging & Integration:** Validated materials are automatically cataloged and stored, ready for immediate use across platforms.
- **Security & Access Control:** Advanced security features and role-based access (2FA) protect sensitive material and monitor user activity.



# Efficiency in Action

## Some figures

- **Active Users:** 471 internal users + 1,148 external producers.
- **Productions & Episodes:** 1,275 productions and 22,222 episodes.
- **Monthly Data Transfer:** 20 TB of data transferred.
- **Quality Assurance & Transcodings:** 23,856 quality checks and 27,588 master transcodings.
- **Cloud Storage & Downloads:** 166,397 materials uploaded, 60,500 metadata ingested, and 183,399 total downloads.





# *Your Journey Starts Here*

## **Join the *A-IngestPro* Community Today**

- **Built for Broadcasters by Broadcasters:** All-in-one platform, simplifying complex media workflows.
- **Efficient Collaboration:** Effortlessly manage tasks from requests to validation with clear roles and automated notifications.
- **Top-Notch Quality Assurance:** Ensure superior content quality with *automated checks* and *expert reviews*.
- **Immediate Integration:** Instantly catalog and integrate content for *broadcast* and *web* with advanced security measures.



# Thanks



## Join Us at IBC

Booth 5A.57

C/ Pintor Ribalta, 13 - 3  
08028 – BARCELONA  
T: (+34) 93 448 80 95  
[info@anglatecnic.com](mailto:info@anglatecnic.com)  
[www.anglatecnic.com](http://www.anglatecnic.com)

